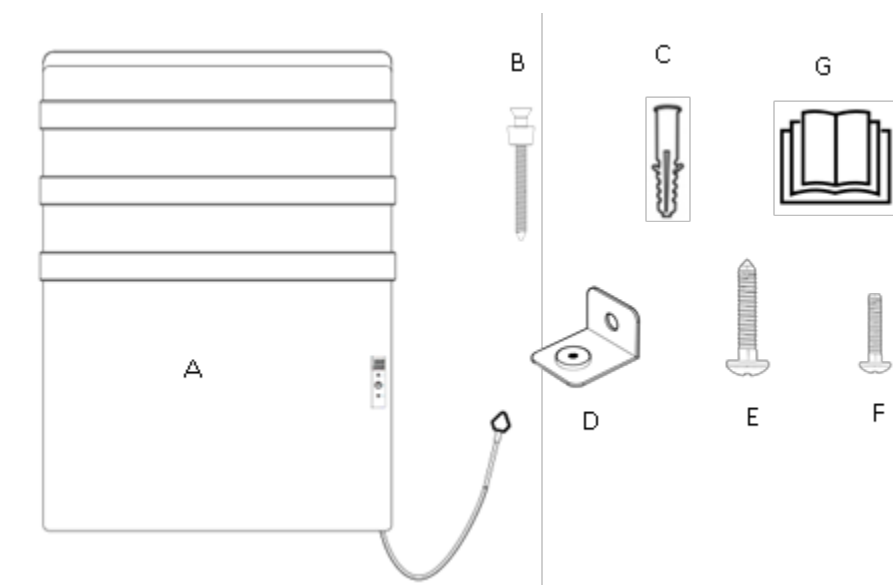


## Installation & Operation Manual for Our Electric Towel Rail

### **Please read before use:**

- Thank you for purchasing this heated towel rail.
- Please read the instructions carefully before attempting to install or operate this product.
- Please keep this booklet for future reference.

### **Items included:**



**A:** Electric Towel Rail    **B:** Screw x3 (M4.8\*50mm)

**C:** Expansion Plugs x3    **D:** Bottom Mounting Bracket x1

**E:** Screw x1 (M4.8\*40mm)    **F:** Screw x1 (M3\*16mm)

**G:** Manual

### **Contents:**

1. Safety Introduction
2. Cleaning Information
3. Installation
4. Product Information
5. Operation
6. Warranty
7. Disposal

### 1. Safety Introduction:

- It is recommended that the heater is installed at least 600mm above the floor to prevent hazards with young children.
- Never allow children to play on or with the towel warmer.
- Make sure that the electrical circuit breaker is shut off at the main panel before wiring your heater.
- The towel rail must be properly grounded.
- All the wiring done must be in accordance with the electrical safety regulations (NEC, CEC, IEC, BS, AS/NZS etc.) of the countries in which it operates and should be installed by a qualified electrician.
- Do not install the product in front of a socket to avoid the risk of electric shock if a wet item touches the socket.
- Do not place your towel rail inside a shower, sauna, or steam room.
- Do not use an extension lead to plug the towel rail in.
- Not suitable for use with gypsum board, density board or other non-load bearing materials.
- The ambient temperature of this product shall not exceed 35°C.

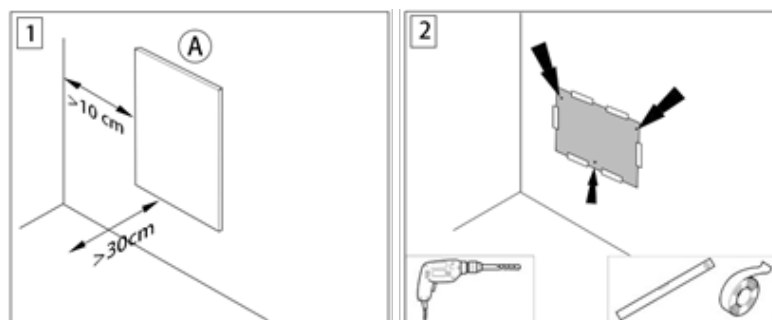
### 2. Cleaning Information

- Ensure that the power supply to the towel rail is disconnected before an installation or maintenance.
- Clean the towel rail with a soft, non-abrasive damp cloth while warm.
- Once the towel rail has cooled down, wipe with a dry cloth.
- Do not use abrasive cleaning powders, metal polish, or chlorine-based cleaners on any part of the towel rail.

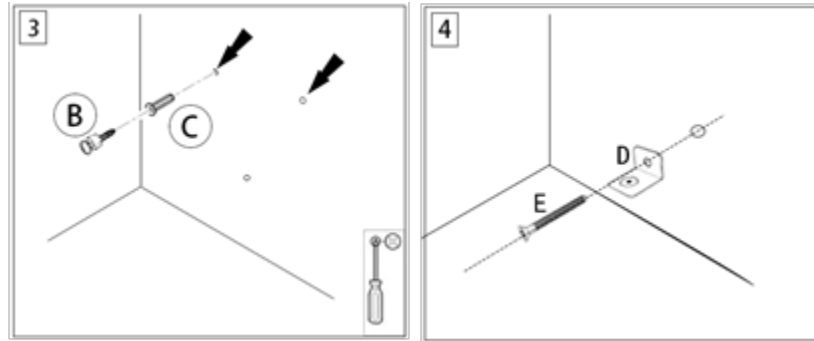
### 3. Installation

This appliance must be installed in according with the instructions in the manual and the IEC guidelines relating to electrical fixtures in bathrooms. The towel rail must be on a GFCI-protected circuit and be wired by a qualified electrician.

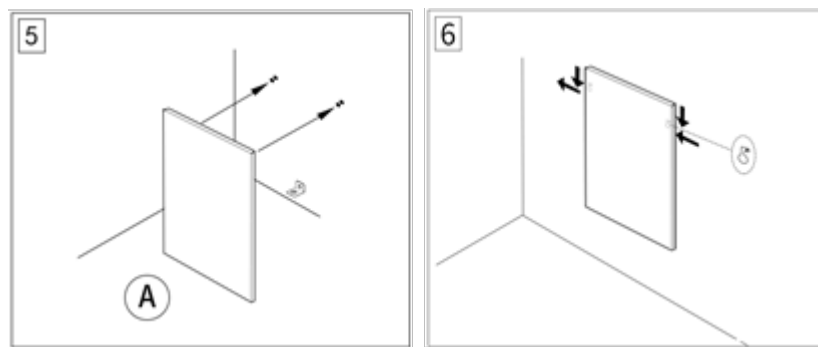
1. Choose your mounting position and keep to the minimum distances (shown below).
2. Mark the positions for your mounting holes onto the template if there are no existing marks. Stick the drilling template onto the wall and drill the holes with an 8mm drill bit.



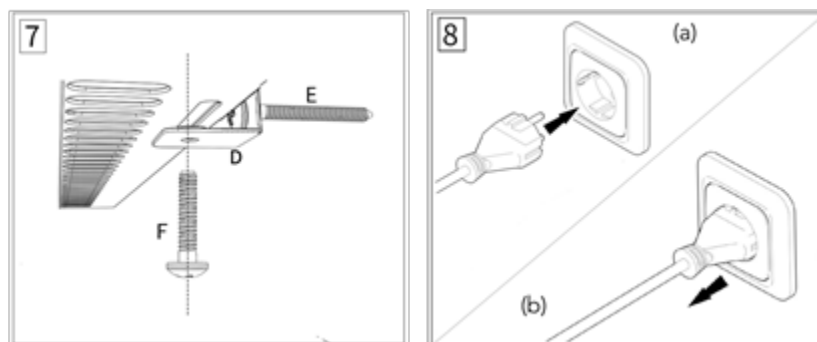
3. Insert the expansion plugs into the drilled hole and use screw 'B' to screw into the top two holes first (screw B is equipped with a limiting device and screwing into the limited position is fine).
4. Use screw 'E' through the hole in accessory 'D' and screw into the expansion plug at the bottom. Adjust 'D' to the horizontal direction according to the below picture.



5. Find the mounting holes on the back square of the towel rail and hang on the top two screws.
6. Slide the device to get the screws into the correct positions as shown in the below picture.



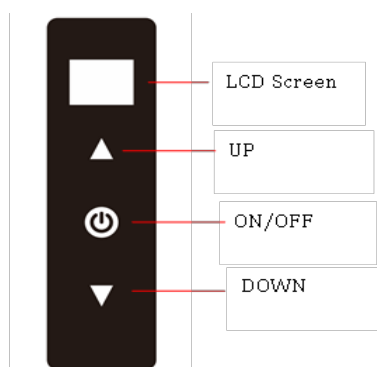
7. Use screw 'F' from the bottom of the towel rail upwards and into the threaded hole on the bottom bracket 'D'.
8. Plug in/wire in the heater and start using your device!



#### 4. Product Information

<b>Material</b>	Aluminium or Glass
<b>Heating element</b>	Graphene Carbon
<b>Switch</b>	Electronic
<b>IP grade</b>	IP54

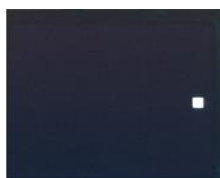
## 5. Operation



1. The screen displays the room & target temperatures, the date & time, and the working mode.
2. The touch screen display has mode selection, flexible programming, temperature adjustment, and time settings.
3. The towel rail has two working modes: heating normally via temperature and a drying timer mode (optional.)
4. The temperature sensor in the bottom of the towel rail reads the room temperature and signals when to turn the towel rail on/off as the ambient temperature rises. When the room temperature is 1°C lower than the set temperature, the heater comes on. When the room temperature is 1°C higher than the set temperature, the heater turns off.

### Manually turning the towel rail ON/OFF

1. When there is power to the towel rail a small white square will appear on the screen (see below).



2. In standby mode, press the power button to turn the towel rail on and it will enter heating mode. Press the power button again to turn the heater off.

### How to switch the working mode?

Hold the power button for more than 1.5 seconds to switch the working mode.

### °C / °F Display:

Hold the ▼ and ▲ buttons for more than 1.5 seconds simultaneously to alternate between Celsius and Fahrenheit.

### Heating open mode:



Press the power button to turn the towel rail on and enter the normal heating mode. Use ▼ and ▲ to allocate the set temperature. Press ▼ and ▲ to adjust this either up or down. After 8 seconds the heater will automatically save the setting if no other buttons are pressed.

*Tips:*

1. Set temperature default display shows 'T 20C', 'C' means that the unit is operating in Celsius.
2. When the set temperature is higher than the room temperature, the 'Heating Symbol' shown above will show.
3. During the heating process, if you press the power button it will turn the heater off. Pressing the power button again will turn it back on.

**Drying Timer:**



Hold the power button for 1.5 seconds to switch to the drying timer mode. The second line '—' will begin to blink, press ▲ to adjust the time and press ▼ to decrease the timer. After setting the timer, wait 8 seconds and the towel rail will automatically save all inputs if no other buttons are pressed.

**Important Notes:**

1. During installation and use, please pay attention to the temperature probe at the lower right corner of the product to avoid damage, if this is damaged it can affect the temperature readings.
2. Do not cover the temperature probe.
3. Please disconnect the heater if it's not going to be used for a long time.
4. To set custom time slots, you must use the SmartLife app.